



Monthly Hydrological Bulletin

Contents:

- ❖ Rainfall trends
- ❖ Streamflow variations
- ❖ Mindu Reservoir
- ❖ Groundwater in Makutopora Wellfield
- ❖ About this bulletin

August, 2020

1. RAINFALL TRENDS

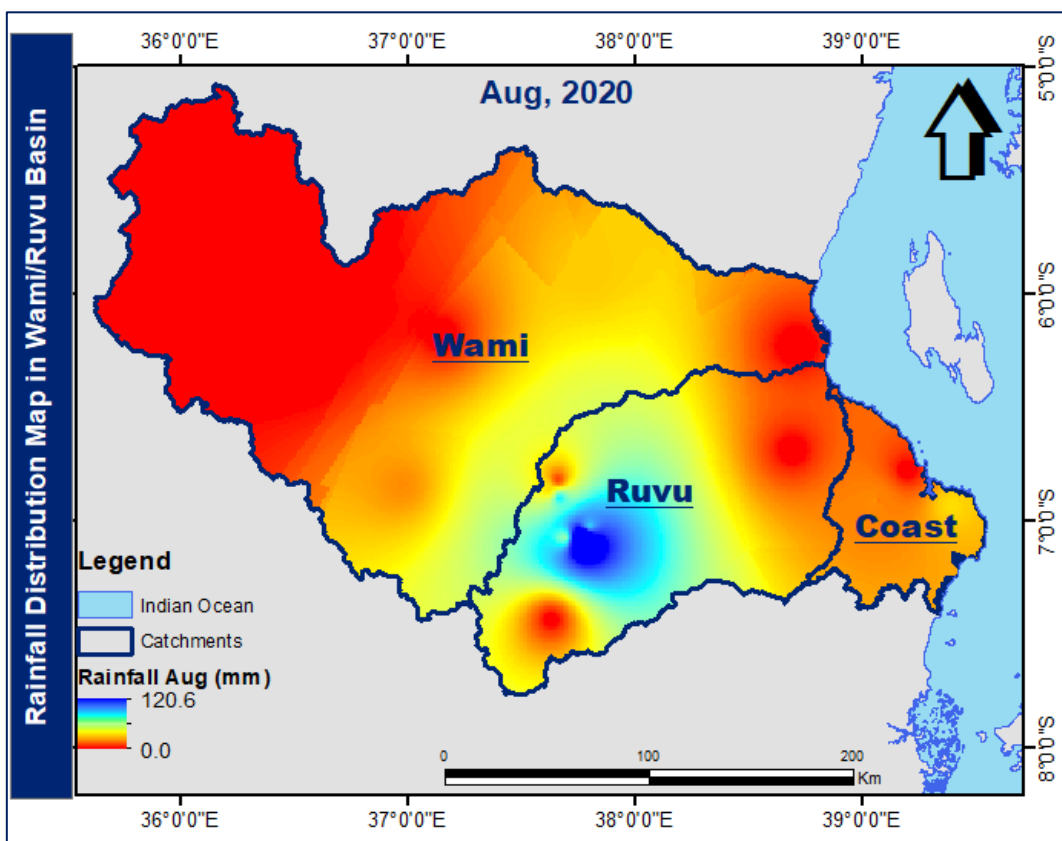


Figure 1: Spatial distribution of rainfalls in Wami/Ruvu Basin– August, 2020

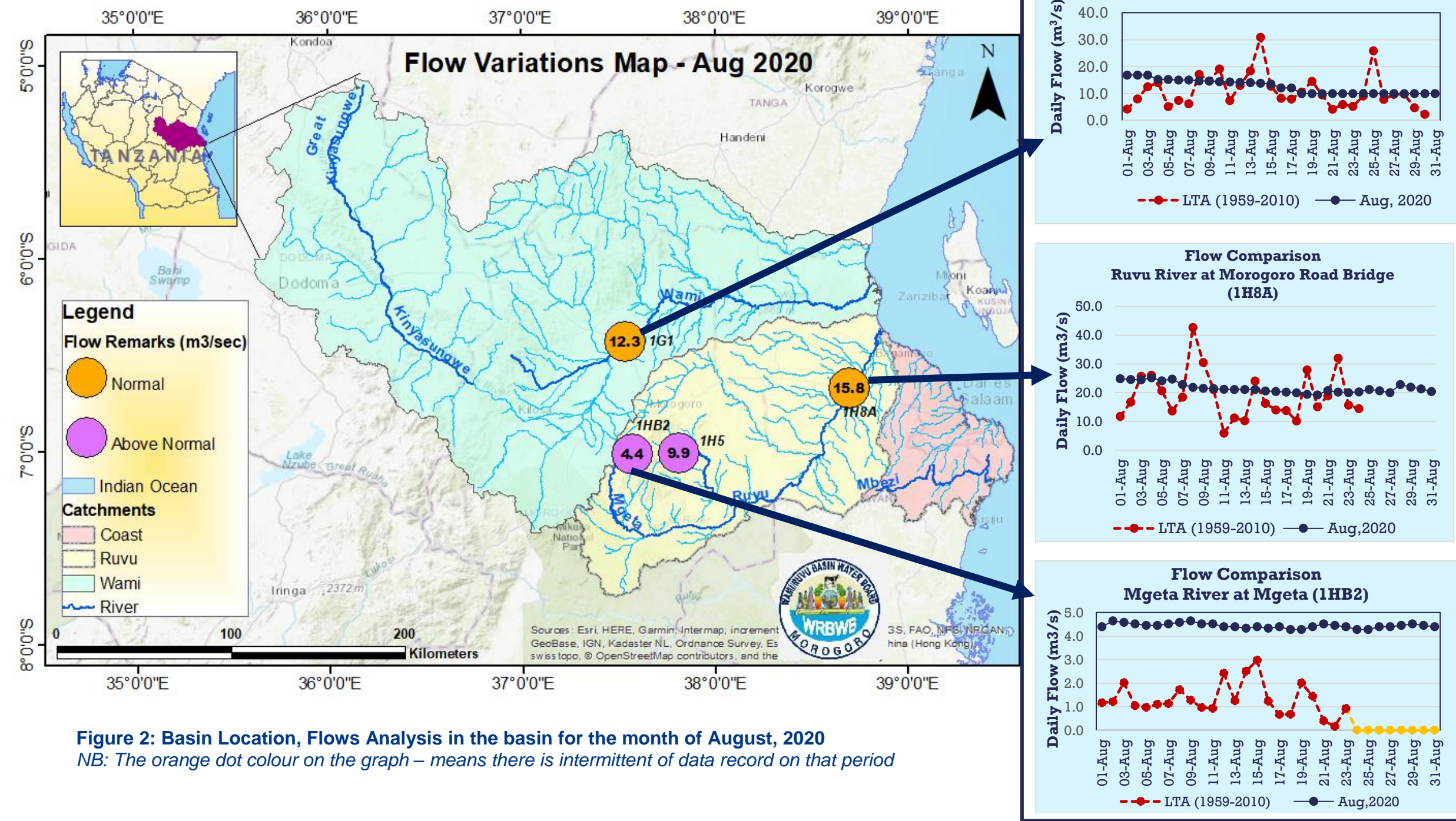
RAINFALL

Rainfall trends in August were decreased towards the north-western direction of Wami catchment and along the east coast parts of the Basin (**Figure 1**). Actually, August is the dry month. As observed in **Figure 1**, most parts of the basin received little or no rainfalls.

However, in comparison with LTA*, the rainfalls received were just normal with the maximum record of 120.6 mm on Mountain Uluguru areas in Ruvu Catchment and the minimum record of 0 mm.

*LTA - Long Term Average

Flow variations



Flow variations and water reservoir

2. STREAMFLOW VARIATIONS

As indicated on **Figure 2**, flows analysis on the month of August, 2020 are presented by four stations, namely; Mgeta river at Mgeta (1HB2), Ruvu river at Kibungo (1H5), Ruvu river at Morogoro road bridge (1H8A) and Wami river at Dakawa (1G1). With respect to Ruvu catchment, and in comparison, with LTA (1959-2010), the monthly mean river flows in particular 1HB2 and 1H5 for the month of August were classified as **Above Normal**, but in 1H8A which is the last station downstream of Ruvu catchment, the August flow was considered as **Normal** compared to LTA (1959-2010). Likewise, in Wami catchment specifically 1G1 station, the observed flow was **Normal** compared to LTA (1954-2010).

3. MINDU RESERVOIR

The monthly mean water levels observed in Mindu reservoir was 507.049 masl which is above average compared to LTA (1997-2010) of 506.857 masl for the month of August, 2020 (**Figure 3**). The maximum water level recorded was 507.08 masl from 6th to 8th August, and the minimum level observed was 507.01 masl on 19th which extend up to 23rd August, 2020.

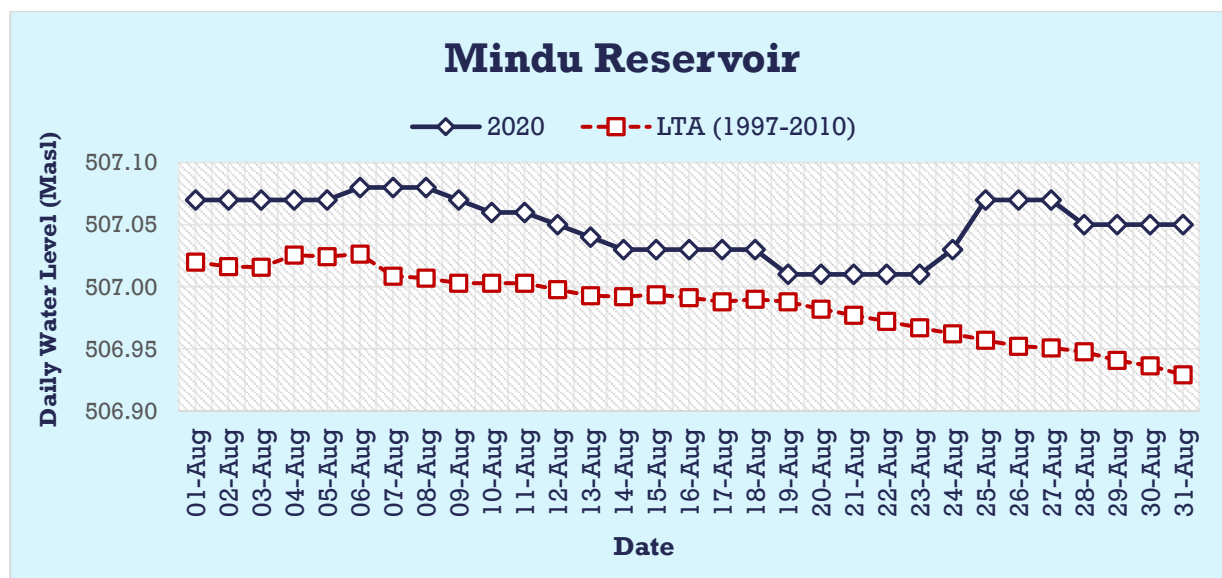
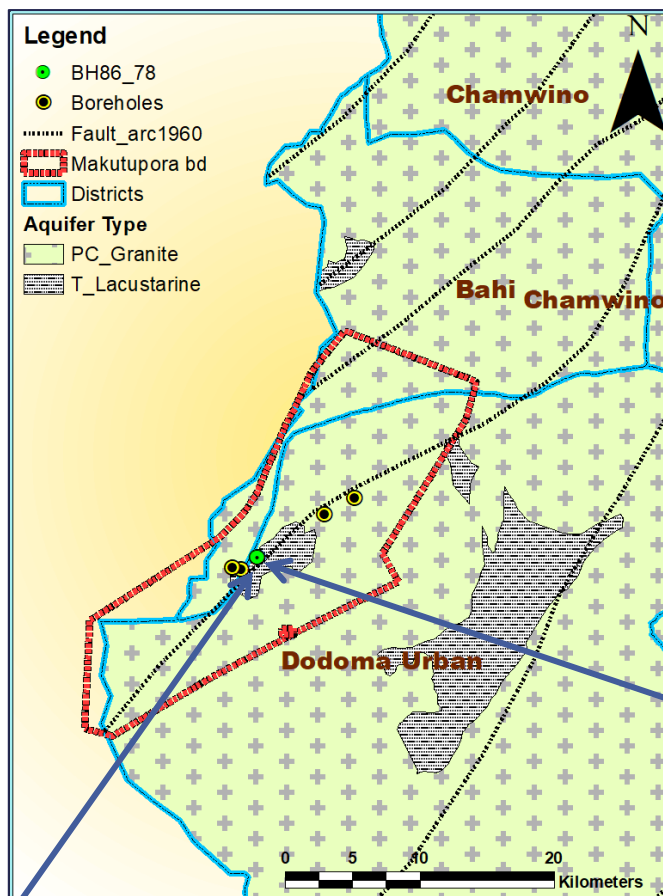


Figure 3: Comparison of daily water level (masl) and LTA (1997-2010) in Mindu Reservoir for the month of August, 2020

Groundwater in Makutopora

4. GROUNDWATER IN MAKUTOPOA WELL-FIELD



Groundwater trends in Makutopora wellfield in Dodoma is presented by borehole no. 86/78. It is observed that the daily water level recorded in August, 2020 was higher by 27% compared to the LTA (2010-2020), with maximum and minimum of 34.82m and 33.89m respectively (**Figure 4**).

Comparison of Daily Water Level Trends - BH no. 86/78

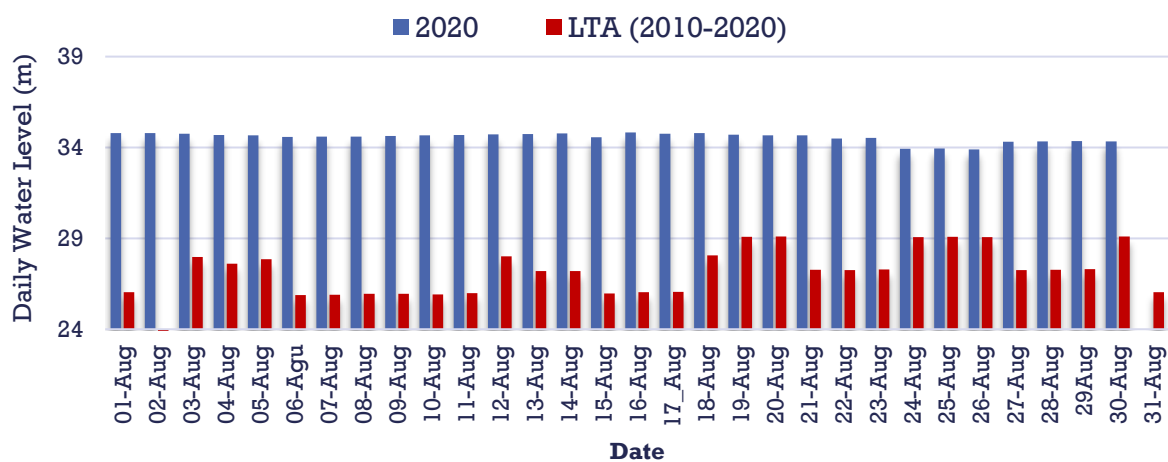


Figure 4: Comparison of daily water level trends in Makutopora well field

About this bulletin

ABOUT THIS BULLETIN

This is Wami/Ruvu Basin Hydrological Bulletin of August, 2020. It aims at giving a hydrological status in the Basin.

The contents on this bulletin are based on data collected from Basin monitoring stations.

This bulletin can be found on our website
www.wamiruvu.or.tz

Tel: +255 23 2614748

Fax: +255 23 2613519

Website: www.wamiruvu.or.tz

E-mail: basins.wamiruvu@maji.go.tz

Wami/Ruvu Basin Water Board

P. O. Box 826

Morogoro

Tanzania



Mito yetu, Maendeleo yetu Tuitunze

